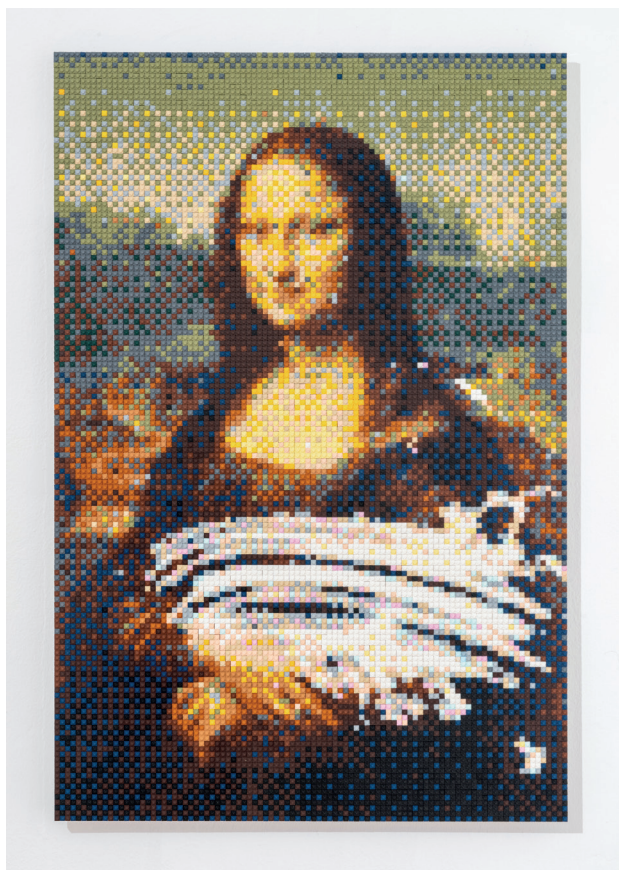


C O N T E N T S

FEBRUARY 2026



Mona Lisa Smeared in Cream, 2023, by Ai Weiwei; toy bricks. Photographer: Ela Bialkowska, OKNO Studio

TALKING POINT

- 102 The Long View:** Two mother-daughter artist duos reveal how creativity is transmitted through presence, not pedagogy.
By Malika Halder
- 106 Architecture of Repair:** At Sunder Nursery, Tara Lal's Aranyani Pavilion transforms colonial histories and native plants into a space for healing. *By Akshaya Pillai*
- 108 Of Play & Power:** Artist Ai Weiwei takes us through his first show in India.
By Shreya Ajmani
- 112 Magic & Memory:** A conversation with Amitav Ghosh on *Ghost Eye*, loss, returning characters, and imagining worlds beyond human exceptionalism. *By Anwesh Banerjee*

- 116 Curious is Cool:** In an age inundated with AI slop and digital overload, intellectual obscurity has become a new form of social capital, as culture learns to aestheticise nerdiness and fold it neatly into the rules of display. *By Suvrat Arora*

BEAUTY

- 146 Beyond the Surface:** The future of skincare is no longer topical intervention but cellular restoration. *By Kriti Shukla*
- 148 The Oral Gap:** Dental care is more than a cosmetic concern. *Bazaar India* explores how hormonal shifts shape women's oral health, and how it reflects overall well-being. *By Tatiana Dias*

ESCAPE

- 158 New Inner Circle:** How members-only clubs across India are becoming cultural living rooms. *By Malika Halder*

IN EVERY ISSUE

- 16** Editor's Letter
- 162** How Bazaar



Aranyani Pavilion